



Trimble SiteVision

RUGGED, OUTDOOR AUGMENTED REALITY SYSTEM FOR VISUALIZING AND REPORTING

Trimble® SiteVision™ is a user-friendly multi-purpose tool used for communicating new designs and changes to field crews, inspections, determining productivity and calculating quick measurements on site including points, lines and cut/fill values. SiteVision plays a key role in all stages of the construction life cycle: planning and initial visualization, checking progress and identifying issues to reduce cost and increase efficiency



Monitor satellite connectivity, accuracy and orientation

Integrated Electronic Distance Measurement (EDM) to take accurate measurements on the spot

Lightweight, portable handheld unit to view data in context at any angle, at true-life scale

Attachable sun shade allows for better screen visibility

Show/hide layers in your model to manage which details you want to view

Visualize data in the context of where you are standing by easily switching between 3D view and 2D plan view for a bird's eye view of the site

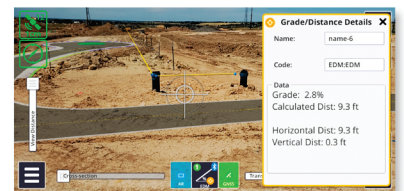
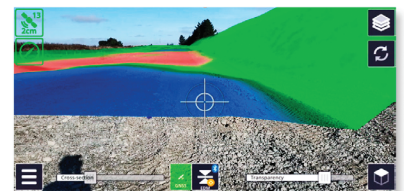
See the environment and the design in context at different opacities using the transparency slider

Applications for capturing georeferenced images, tasks and point, line and cut/fill measurements

Key Features

SiteVision brings spatial data to life so you can easily visualize, explore and understand complex information with unrivaled accuracy, right from your mobile device.

- ▶ Customize the blended augmented reality/real world view based on the data that is most relevant to your task: cross section view, pit view, transparency and view distance sliders, all with full layer support.
- ▶ Expressed with a virtual overlay on the surface, thematic maps use color-coding to display information based on color graduations: cut/fill maps, pass count maps, density, and more.
- ▶ Monitor progress onsite with cut/fill information to stay on top of operations.
- ▶ Access up-to-date data to support decision making.
- ▶ Lightweight handheld model easily travels the entire site, pole-mounted option available to accurately position and capture data.
- ▶ Swappable batteries for better power management and more time in the field.
- ▶ Seamlessly integrates with your data from Trimble Business Center, SketchUp, Trimble Novapoint, AutoCAD, and more.





KEY BENEFITS

Increase Efficiency, Decrease Risk

The intersection of physical and digital worlds in SiteVision allows contractors to bring data to life. Providing real-world context to designs enables users to quickly communicate complicated plans and drawings, confirm designs and precisely identify where hidden assets are to minimize costly errors and safety related incidents. Easily understanding progress on site keeps everything on track and reduces the possibility of unexpected issues along the way.

Applications

SiteVision enables users to easily understand new designs, existing underground services, and how future landscapes will look over time without the need to interpret complex 2D plans.

- ▶ Plan and visualize onsite progress, inspect completed work, complete quality management and identify issues early to reduce costs and time
- ▶ Check finished grade and laid material thickness against design elevations and tolerances
- ▶ Confirm designs and avoid issues by identifying the location of utilities in the context of the real world
- ▶ Monitor and conduct quality control for earthworks and paving operations
- ▶ Synchronize design and field data
- ▶ Share, communicate and collectively interact in real time with easy-to-understand visualizations for efficient collaboration with people of all skill levels
- ▶ Improve communications between the field and office by connecting more people on and off the jobsite
- ▶ Take photos, measurements and notes in the field for accurate and up-to-date reporting, create tasks and assign them to team members
- ▶ Use sub surface mapping information to improve plans by visualizing the location, size and attributes of underground infrastructure such as water, power, gas and telecommunications



888-4-A-LASER

SITECH NorCal
833 Montague Ave.
San Leandro, CA 94577
www.SITECHnorcal.com

SITECH Oregon
21505 Bents Court NE
Aurora, OR 97002
www.SITEChoregon.com

TRIMBLE CIVIL ENGINEERING AND CONSTRUCTION
10368 Westmoor Drive
Westminster CO 80021 USA
800-361-1249 (Toll Free)
+1-937-245-5154 Phone
construction_news@trimble.com

